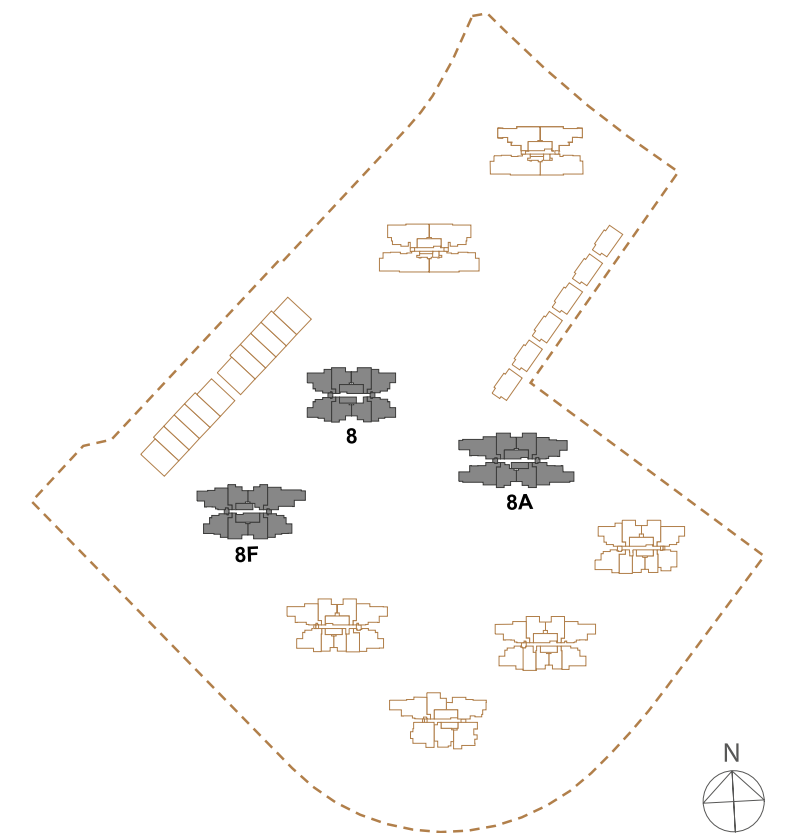




MODERN DISCOVERY OF WHOLESOME SERENITY



TOWER BLOCKS WITH A TOUCH OF ASIAN
CULTURE TO THE ARCHITECTURAL DESIGN

“FAMILY RESORT LIVING” WITH
LEISURE KID’S POOL, DINING PAVILION
AND OTHER RECREATIONAL FACILITIES SUITABLE
FOR BOTH THE YOUNG AND YOUNG AT HEART

EARTH-TONED COLOUR PALETTE AND PATTERN FOR
A SUBTLE YET ELEGANT FACADE

BLOCK 8, 8A, 8F

ENJOY COMMUNAL LIVING WITH

approx. **400,000** sq. ft.

OF FACILITIES



RELAX+

- 1 LAWN 1 (READING LAWN)
- 2 RAIN GARDEN
- 3 COMMUNITY GARDEN
- 4 RAIN SPA PAVILION
- 5 CABANA
- 6 LAWN 3 (STARGAZING LAWN)
- 7 PAVILION STUDY 1 (CHILLAX CORNER 1)
- 8 PAVILION STUDY 2 (CHILLAX CORNER 2)
- SKY GARDEN (Block 8E @ 24th Storey)

RELAX

- 9 LAWN 2 (PICNIC LAWN)
- 10 DINING DECK
- 11 JACUZZI ALCOVE 1
- 12 JACUZZI ALCOVE 2
- 13 AQUATHERAPY POOL
- 14 REFLEXOLOGY GARDEN
- 15 HYDROTHERAPY POOL
- 16 DINING PAVILION (TEA PLACE)
- 17 PAVILION (STUDY / LOUNGE 1)
- 18 PAVILION (STUDY / LOUNGE 2)

BALANCE

- 19 WATER FEATURES 1
- 20 WATER FEATURES 2
- 21 WATER FEATURES 3
- 22 CLUBHOUSE 1 (READING ROOM)
- 23 CHANGING ROOM & STEAM ROOM
- 24 LAUNDRY PAVILION
- 25 POOL DECK 1
- 26 POOL DECK 2
- 27 50M LAP POOL 1
- 28 POOL DECK 3
- 29 50M LAP POOL 2
- 30 POOL DECK 4
- 31 50M LAP POOL 3
- 32 POOL DECK 5
- 33 COURTYARD PAVILION (CLEMATIS PAVILION)
- 34 PAVILION (PET'S PLAYGROUND)
- 35 PET LAWN

ACTIVE

- 36 CLUBHOUSE 2 (CHEF'S KITCHEN)
- 37 CLUBHOUSE 3 (CELEBRATION HALL)
- 38 DINING PAVILION (MEDITERRANEAN 1)
- 39 DINING PAVILION (MEDITERRANEAN 2)
- 40 DINING PAVILION (CARIBBEAN)
- 41 DINING PAVILION (GREENHOUSE)
- 42 DINING PAVILION (TEPPANYAKI)
- 43 DINING PAVILION (WOK IT)
- 44 TODDLER PLAY POOL
- 45 KIDS' WATER PLAY
- 46 PAVILION KIDS PORTABLE BBQ (KIDS' PLAYHOUSE)

ACTIVE+

- 47 CLUBHOUSE 4 @ L1 (MULTI-PURPOSE ENTERTAINMENT ROOM : Music / Games Console / Movie)
- 48 CLUBHOUSE 4 @ L1 (MULTI-PURPOSE GAMES ROOM)
- 49 CLUBHOUSE 5 @ L2 (GYM)
- 50 CLUBHOUSE 5 @ L2 (DANCE STUDIO)
- 51 PLAYGROUND 1 (AQUATIC THEMED)
- 52 MAIN POOL (BEACH POOL)
- 53 TENNIS COURT
- 54 MULTI-PURPOSE COURT
- 55 OUTDOOR FITNESS 1
- 56 OUTDOOR FITNESS 2
- 57 PAVILION SPORT (SPORTS ARENA)
- 58 CAMPING GARDEN
- 59 PLAYGROUND 2 (INCLUSIVE)
- 60 PLAYGROUND 3 (ZOO THEMED)

ANCILLARIES

- A MAIN ENTRANCE
- B DROP-OFF
- C GUARDHOUSE
- D SIDE GATE
- E ARRIVAL LOBBY
- F COVERED LINKWAY TO AYE BUS STOP
- G COVERED LINKWAY TO BUS STOP AND TO CLEMENTI MRT VIA CASCADIA
- H SECONDARY VEHICULAR ACCESS
- I SUBSTATION / TRANSFORMER ROOM
- J MDF (Main Distribution Frame)
- K GENSET
- L BIN CENTRE
- M M&E VENTILATION SHAFT
- WATER TANK (All Towers @ Lower Roof Level)
- BOOSTER PUMP



OVERALL FACILITIES PLAN



WARDROBE

All photographs are impressions only

UNIT
DISTRIBUTION
CHART

- 2 - BEDROOM
- 2 - BEDROOM
STUDIO
- 3 - BEDROOM
- 3 - BEDROOM
PREMIUM
- 4 - BEDROOM
PREMIUM
- 5 - BEDROOM
- PENTHOUSE

BLOCK 8

CHOICE UNITS

UNIT STOREY	09	10	11	12	13	14	15	16
24	5BR 2 - H (#24 - 09)		5BR 2 - H (#24 - 11)		5BR 1 - H (#24 - 13)		5BR 1 - H (#24 - 15)	
23	5BR 2 (#23 - 09)		5BR 2 (#23 - 11)		5BR 1 (#23 - 13)		5BR 1 (#23 - 15)	
22	5BR 2 (#22 - 09)		5BR 2 (#22 - 11)		5BR 1 (#22 - 13)		5BR 1 (#22 - 15)	
21	5BR 2 (#21 - 09)		5BR 2 (#21 - 11)		5BR 1 (#21 - 13)		5BR 1 (#21 - 15)	
20	5BR 2 (#20 - 09)		5BR 2 (#20 - 11)		5BR 1 (#20 - 13)		5BR 1 (#20 - 15)	
19	5BR 2 (#19 - 09)		5BR 2 (#19 - 11)		5BR 1 (#19 - 13)		5BR 1 (#19 - 15)	
18	5BR 2 (#18 - 09)		5BR 2 (#18 - 11)		5BR 1 (#18 - 13)		5BR 1 (#18 - 15)	
17	3BR - 6	2BR - 4	2BR - 4	3BR - 6	3BR - 5	2BR - 5	2BR - 5	3BR - 5
16	3BR - 6	2BR - 4	2BR - 4	3BR - 6	3BR - 5	2BR - 5	2BR - 5	3BR - 5
15	3BR - 6	2BR - 4	2BR - 4	3BR - 6	3BR - 5	2BR - 5	2BR - 5	3BR - 5
14	3BR - 6	2BR - 4	2BR - 4	3BR - 6	3BR - 5	2BR - 5	2BR - 5	3BR - 5
13	3BR - 6	2BR - 4	2BR - 4	3BR - 6	3BR - 5	2BR - 5	2BR - 5	3BR - 5
12	3BR - 6	2BR - 4	2BR - 4	3BR - 6	3BR - 5	2BR - 5	2BR - 5	3BR - 5
11	3BR - 6	2BR - 4	2BR - 4	3BR - 6	3BR - 5	2BR - 5	2BR - 5	3BR - 5
10	3BR - 6	2BR - 4	2BR - 4	3BR - 6	3BR - 5	2BR - 5	2BR - 5	3BR - 5
9	3BR - 6	2BR - 4	2BR - 4	3BR - 6	3BR - 5	2BR - 5	2BR - 5	3BR - 5
8	3BR - 6	2BR - 4	2BR - 4	3BR - 6	3BR - 5	2BR - 5	2BR - 5	3BR - 5
7	3BR - 6	2BR - 4	2BR - 4	3BR - 6	3BR - 5	2BR - 5	2BR - 5	3BR - 5
6	3BR - 6	2BR - 4	2BR - 4	3BR - 6	3BR - 5	2BR - 5	2BR - 5	3BR - 5
5	3BR - 6	2BR - 4	2BR - 4	3BR - 6	3BR - 5	2BR - 5	2BR - 5	3BR - 5
4	3BR - 6	2BR - 4	2BR - 4	3BR - 6	3BR - 5	2BR - 5	2BR - 5	3BR - 5
3	3BR - 6	2BR - 4	2BR - 4	3BR - 6	3BR - 5	2BR - 5	2BR - 5	3BR - 5
2	3BR - 6	2BR - 4	2BR - 4	3BR - 6	3BR - 5	2BR - 5	2BR - 5	3BR - 5
1								
B1								

UNIT
DISTRIBUTION
CHART

BLOCK 8A

CHOICE UNITS

UNIT STOREY	17	18	19	20	21	22	23	24
24	PH 3 (#24 - 17)		PH 3 (#24 - 19)		PH 4 (#24 - 21)		PH5 (#24 - 23)	
23	4BR - P1	2BR - 3	2BR - S1	4BR - P1	4BR - P1	2BR - 2	2BR - 2	3BR - P2
22	4BR - P1	2BR - 3	2BR - S1	4BR - P1	4BR - P1	2BR - 2	2BR - 2	3BR - P2
21	4BR - P1	2BR - 3	2BR - S1	4BR - P1	4BR - P1	2BR - 2	2BR - 2	3BR - P2
20	4BR - P1	2BR - 3	2BR - S1	4BR - P1	4BR - P1	2BR - 2	2BR - 2	3BR - P2
19	4BR - P1	2BR - 3	2BR - S1	4BR - P1	4BR - P1	2BR - 2	2BR - 2	3BR - P2
18	4BR - P1	2BR - 3	2BR - S1	4BR - P1	4BR - P1	2BR - 2	2BR - 2	3BR - P2
17	4BR - P1	2BR - 3	2BR - S1	4BR - P1	4BR - P1	2BR - 2	2BR - 2	3BR - P2
16	4BR - P1	2BR - 3	2BR - S1	4BR - P1	4BR - P1	2BR - 2	2BR - 2	3BR - P2
15	4BR - P1	2BR - 3	2BR - S1	4BR - P1	4BR - P1	2BR - 2	2BR - 2	3BR - P2
14	4BR - P1	2BR - 3	2BR - S1	4BR - P1	4BR - P1	2BR - 2	2BR - 2	3BR - P2
13	4BR - P1	2BR - 3	2BR - S1	4BR - P1	4BR - P1	2BR - 2	2BR - 2	3BR - P2
12	4BR - P1	2BR - 3	2BR - S1	4BR - P1	4BR - P1	2BR - 2	2BR - 2	3BR - P2
11	4BR - P1	2BR - 3	2BR - S1	4BR - P1	4BR - P1	2BR - 2	2BR - 2	3BR - P2
10	4BR - P1	2BR - 3	2BR - S1	4BR - P1	4BR - P1	2BR - 2	2BR - 2	3BR - P2
9	4BR - P1	2BR - 3	2BR - S1	4BR - P1	4BR - P1	2BR - 2	2BR - 2	3BR - P2
8	4BR - P1	2BR - 3	2BR - S1	4BR - P1	4BR - P1	2BR - 2	2BR - 2	3BR - P2
7	4BR - P1	2BR - 3	2BR - S1	4BR - P1	4BR - P1	2BR - 2	2BR - 2	3BR - P2
6	4BR - P1	2BR - 3	2BR - S1	4BR - P1	4BR - P1	2BR - 2	2BR - 2	3BR - P2
5	4BR - P1	2BR - 3	2BR - S1	4BR - P1	4BR - P1	2BR - 2	2BR - 2	3BR - P2
4	4BR - P1	2BR - 3	2BR - S1	4BR - P1	4BR - P1	2BR - 2	2BR - 2	3BR - P2
3	4BR - P1	2BR - 3	2BR - S1	4BR - P1	4BR - P1	2BR - 2	2BR - 2	3BR - P2
2	4BR - P1	2BR - 3	2BR - S1	4BR - P1	4BR - P1	2BR - 2	2BR - 2	3BR - P2
1								
B1								

- 2 - BEDROOM
- 2 - BEDROOM STUDIO
- 3 - BEDROOM
- 3 - BEDROOM PREMIUM
- 4 - BEDROOM PREMIUM
- 5 - BEDROOM
- PENTHOUSE

BLOCK 8F

CHOICE UNITS

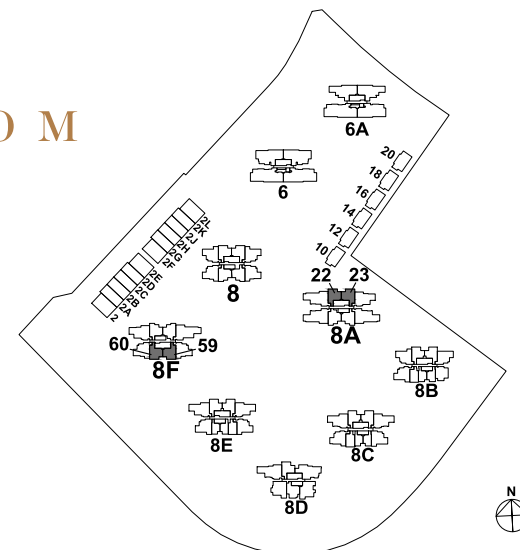
UNIT STOREY	58	59	60	61	62	63	64	65
24	PH 1 (#24 - 59)		PH 1 (#24 - 61)		PH 2 (#24 - 63)		PH3 (#24 - 65)	
23	3BR - 4	2BR - 2	2BR - 2	3BR - 4	3BR - P2	2BR - 3	2BR - S1	4BR - P1
22	3BR - 4	2BR - 2	2BR - 2	3BR - 4	3BR - P2	2BR - 3	2BR - S1	4BR - P1
21	3BR - 4	2BR - 2	2BR - 2	3BR - 4	3BR - P2	2BR - 3	2BR - S1	4BR - P1
20	3BR - 4	2BR - 2	2BR - 2	3BR - 4	3BR - P2	2BR - 3	2BR - S1	4BR - P1
19	3BR - 4	2BR - 2	2BR - 2	3BR - 4	3BR - P2	2BR - 3	2BR - S1	4BR - P1
18	3BR - 4	2BR - 2	2BR - 2	3BR - 4	3BR - P2	2BR - 3	2BR - S1	4BR - P1
17	3BR - 4	2BR - 2	2BR - 2	3BR - 4	3BR - P2	2BR - 3	2BR - S1	4BR - P1
16	3BR - 4	2BR - 2	2BR - 2	3BR - 4	3BR - P2	2BR - 3	2BR - S1	4BR - P1
15	3BR - 4	2BR - 2	2BR - 2	3BR - 4	3BR - P2	2BR - 3	2BR - S1	4BR - P1
14	3BR - 4	2BR - 2	2BR - 2	3BR - 4	3BR - P2	2BR - 3	2BR - S1	4BR - P1
13	3BR - 4	2BR - 2	2BR - 2	3BR - 4	3BR - P2	2BR - 3	2BR - S1	4BR - P1
12	3BR - 4	2BR - 2	2BR - 2	3BR - 4	3BR - P2	2BR - 3	2BR - S1	4BR - P1
11	3BR - 4	2BR - 2	2BR - 2	3BR - 4	3BR - P2	2BR - 3	2BR - S1	4BR - P1
10	3BR - 4	2BR - 2	2BR - 2	3BR - 4	3BR - P2	2BR - 3	2BR - S1	4BR - P1
9	3BR - 4	2BR - 2	2BR - 2	3BR - 4	3BR - P2	2BR - 3	2BR - S1	4BR - P1
8	3BR - 4	2BR - 2	2BR - 2	3BR - 4	3BR - P2	2BR - 3	2BR - S1	4BR - P1
7	3BR - 4	2BR - 2	2BR - 2	3BR - 4	3BR - P2	2BR - 3	2BR - S1	4BR - P1
6	3BR - 4	2BR - 2	2BR - 2	3BR - 4	3BR - P2	2BR - 3	2BR - S1	4BR - P1
5	3BR - 4	2BR - 2	2BR - 2	3BR - 4	3BR - P2	2BR - 3	2BR - S1	4BR - P1
4	3BR - 4	2BR - 2	2BR - 2	3BR - 4	3BR - P2	2BR - 3	2BR - S1	4BR - P1
3	3BR - 4	2BR - 2	2BR - 2	3BR - 4	3BR - P2	2BR - 3	2BR - S1	4BR - P1
2	3BR - 4	2BR - 2	2BR - 2	3BR - 4	3BR - P2	2BR - 3	2BR - S1	4BR - P1
1								
B1								

2 - BED ROOM

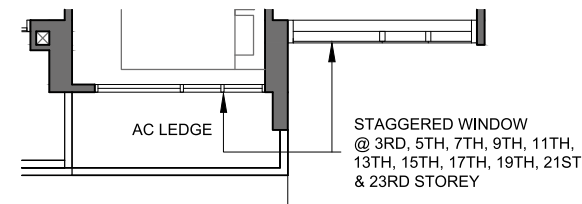
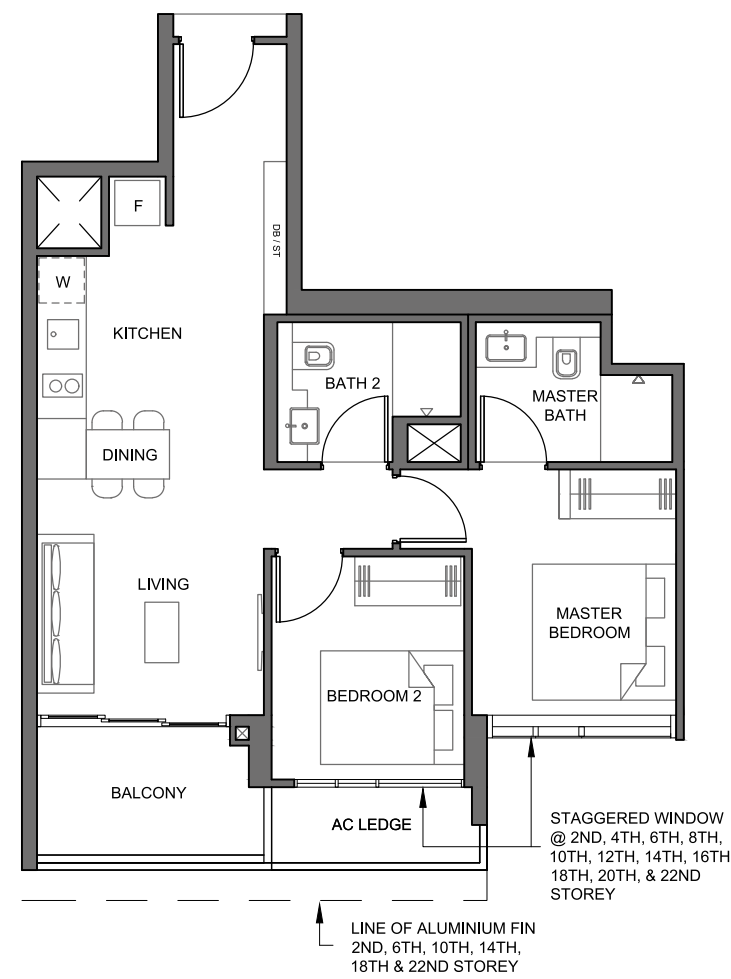
TYPE 2BR - 2

Area 67 sq m / (approx. 721 sq ft)
(Inclusive of 6 sq m balcony
& 3 sq m AC ledge)

Block 8A #02-22 TO #23-22 (mirrored)
#02-23 TO #23-23
Block 8F #02-59 TO #23-59 (mirrored)
#02-60 TO #23-60



Key plan is not drawn to scale



0 1 2 3 4 5M

LEGEND:
F - Fridge DB - Distribution Board ST - Storage W - Washer Cum Dryer  Only Applicable to High Void

U/CF - Under Counter Fridge WIC - Under Counter Wine Chiller

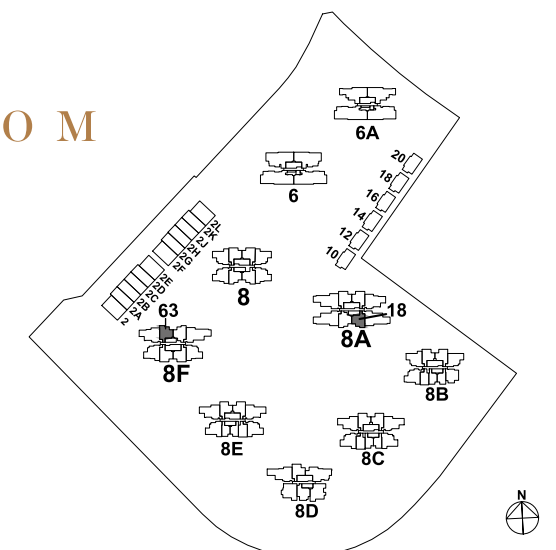
All plans are subjected as may be approved by relevant authorities. Floor areas are approximate measurements and are subjected to final survey.
The balcony shall not be enclosed unless with the approved screen. For illustration of the approved balcony screen, please refer to Annexure 1 of this brochure.

2 - BED ROOM

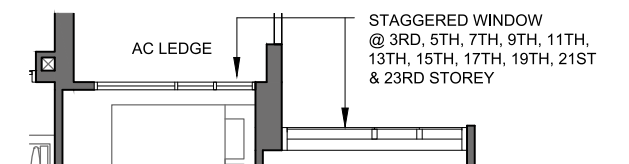
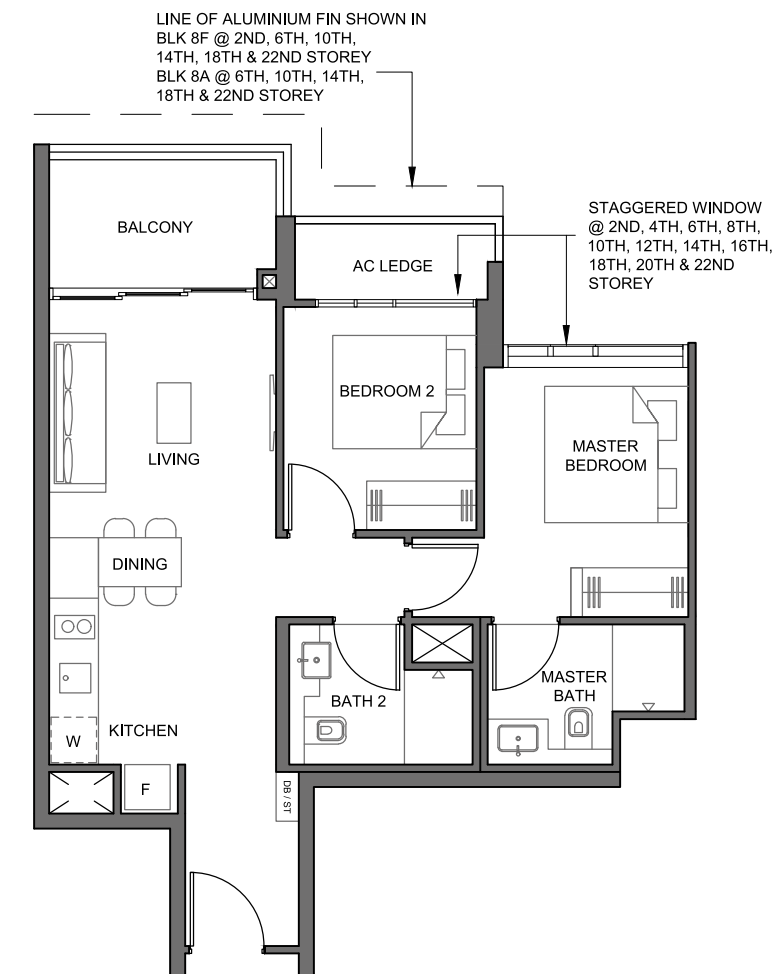
TYPE 2BR - 3

Area 66 sq m / (approx. 710 sq ft)
(Inclusive of 6 sq m balcony
& 3 sq m AC ledge)

Block 8A #02-18 TO #23-18
Block 8F #02-63 TO #23-63



Key plan is not drawn to scale



0 1 2 3 4 5M

LEGEND:
F - Fridge DB - Distribution Board ST - Storage W - Washer Cum Dryer  Only Applicable to High Void

U/CF - Under Counter Fridge WIC - Under Counter Wine Chiller

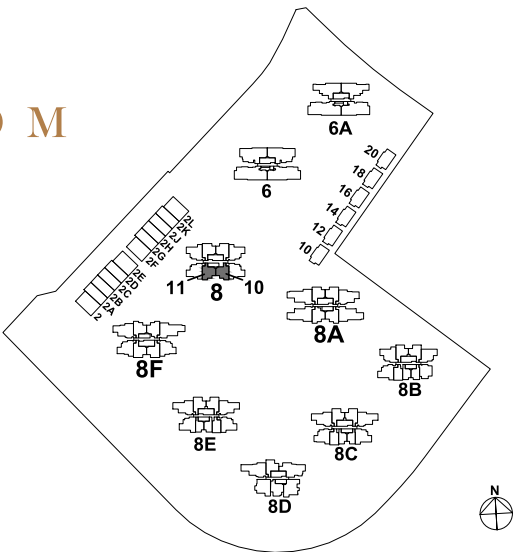
All plans are subjected as may be approved by relevant authorities. Floor areas are approximate measurements and are subjected to final survey.
The balcony shall not be enclosed unless with the approved screen. For illustration of the approved balcony screen, please refer to Annexure 1 of this brochure.

2 - B E D R O O M

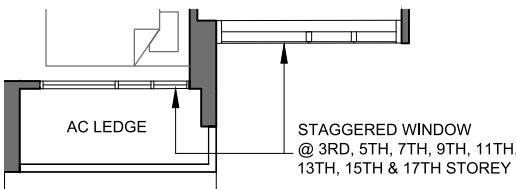
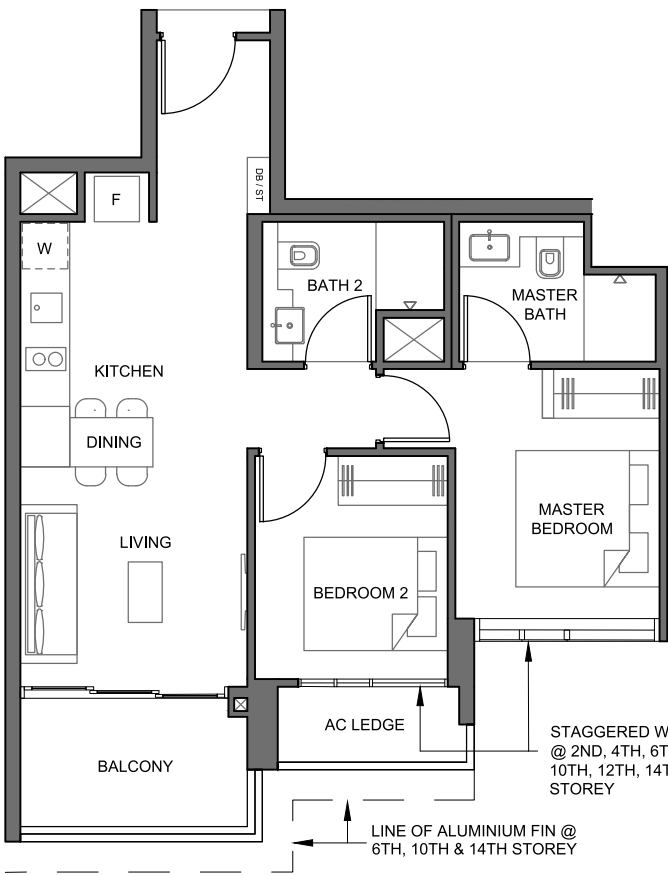
TYPE 2BR - 4

Area 66 sq m / (approx. 710 sq ft)
(Inclusive of 6 sq m balcony
& 3 sq m AC ledge)

Block 8 #02-10 TO #17-10 (mirrored)
#02-11 TO #17-11



Key plan is not drawn to scale



0 1 2 3 4 5M

LEGEND:
F - Fridge DB - Distribution Board ST - Storage W - Washer Cum Dryer
U/CF - Under Counter Fridge WIC - Under Counter Wine Chiller

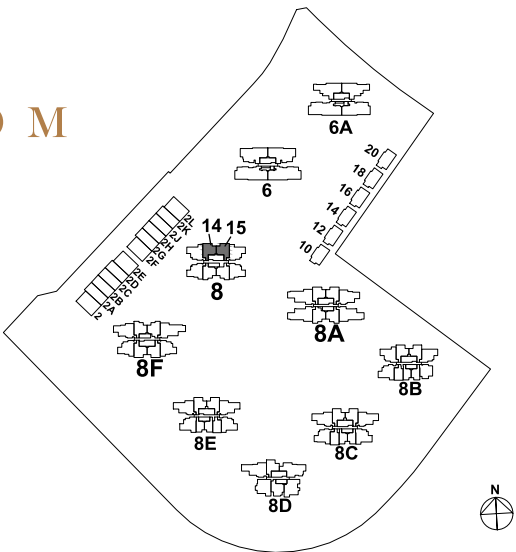
All plans are subjected as may be approved by relevant authorities. Floor areas are approximate measurements and are subjected to final survey.
The balcony shall not be enclosed unless with the approved screen. For illustration of the approved balcony screen, please refer to Annexure 1 of this brochure.

2 - B E D R O O M

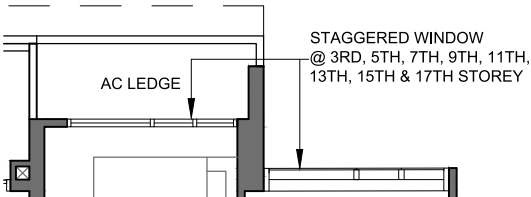
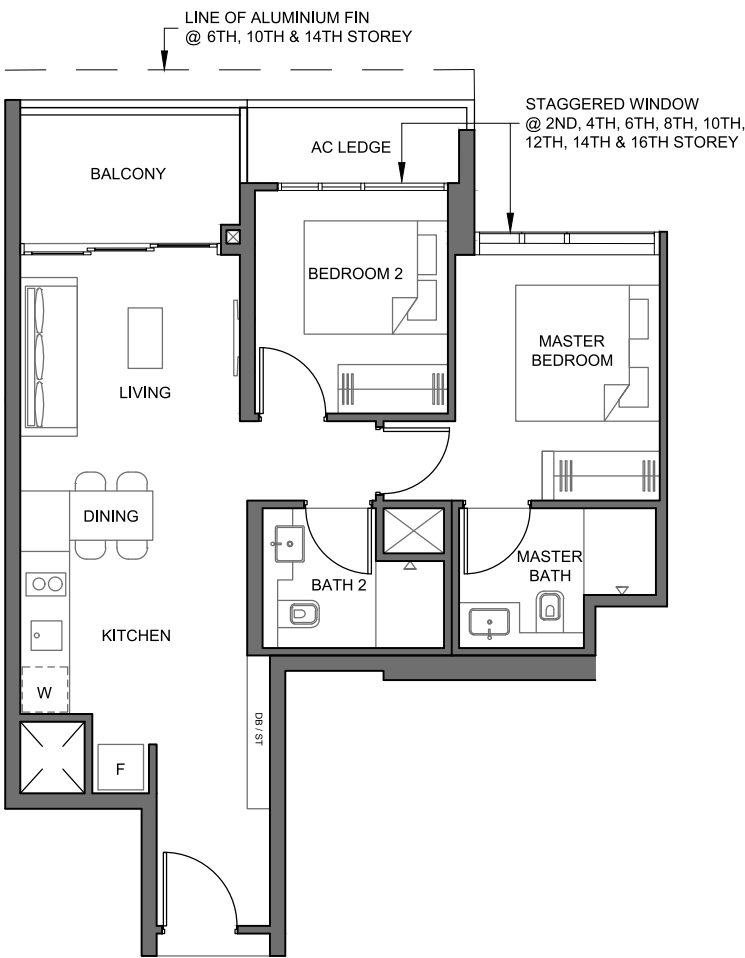
TYPE 2BR - 5

Area 67 sq m / (approx. 721 sq ft)
(Inclusive of 6 sq m balcony
& 3 sq m AC ledge)

Block 8 #02-14 TO #17-14
#02-15 TO #17-15 (mirrored)



Key plan is not drawn to scale



0 1 2 3 4 5M

LEGEND:
F - Fridge DB - Distribution Board ST - Storage W - Washer Cum Dryer
U/CF - Under Counter Fridge WIC - Under Counter Wine Chiller

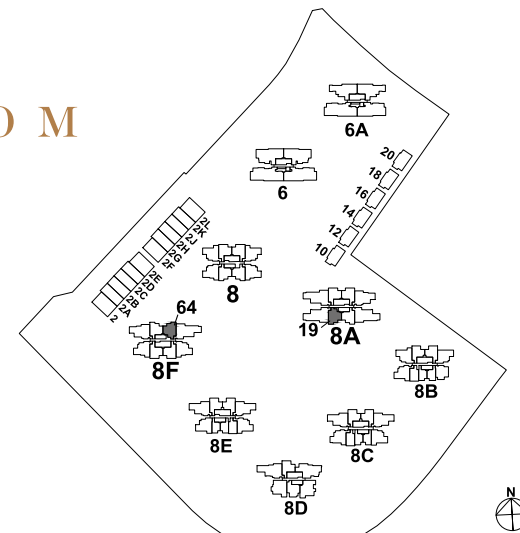
All plans are subjected as may be approved by relevant authorities. Floor areas are approximate measurements and are subjected to final survey.
The balcony shall not be enclosed unless with the approved screen. For illustration of the approved balcony screen, please refer to Annexure 1 of this brochure.

2 - B E D R O O M

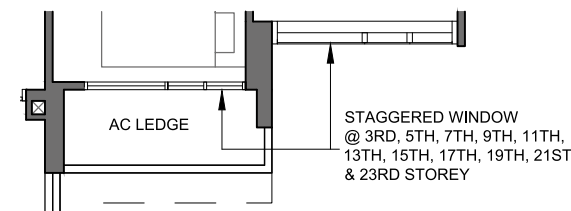
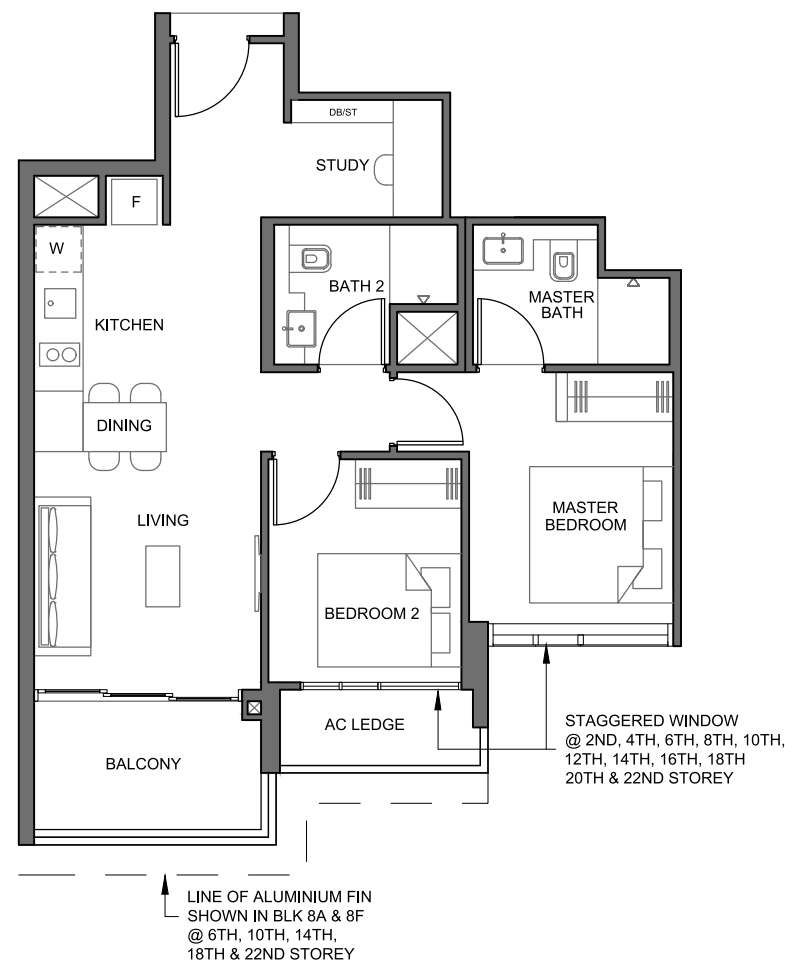
TYPE 2BR - S1

Area 69 sq m / (approx. 743 sq ft)
(Inclusive of 6 sq m balcony
& 3 sq m AC ledge)

Block 8A #02-19 TO #23-19
Block 8F #02-64 TO #23-64



Key plan is not drawn to scale



0 1 2 3 4 5M

LEGEND:
F - Fridge DB - Distribution Board ST - Storage W - Washer Cum Dryer
U/CF - Under Counter Fridge WIC - Under Counter Wine Chiller

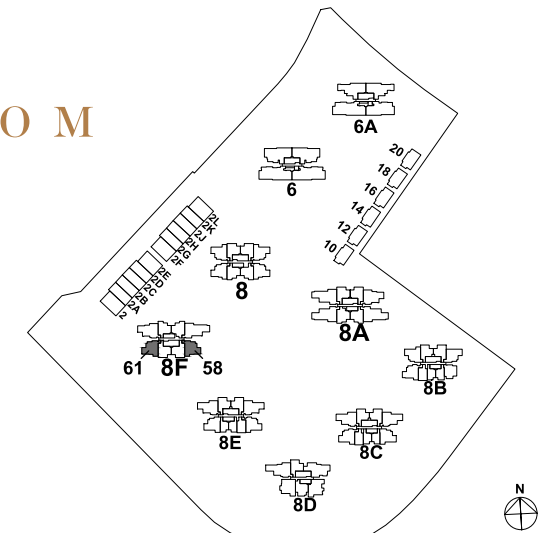
All plans are subjected as may be approved by relevant authorities. Floor areas are approximate measurements and are subjected to final survey.
The balcony shall not be enclosed unless with the approved screen. For illustration of the approved balcony screen, please refer to Annexure 1 of this brochure.

3 - B E D R O O M

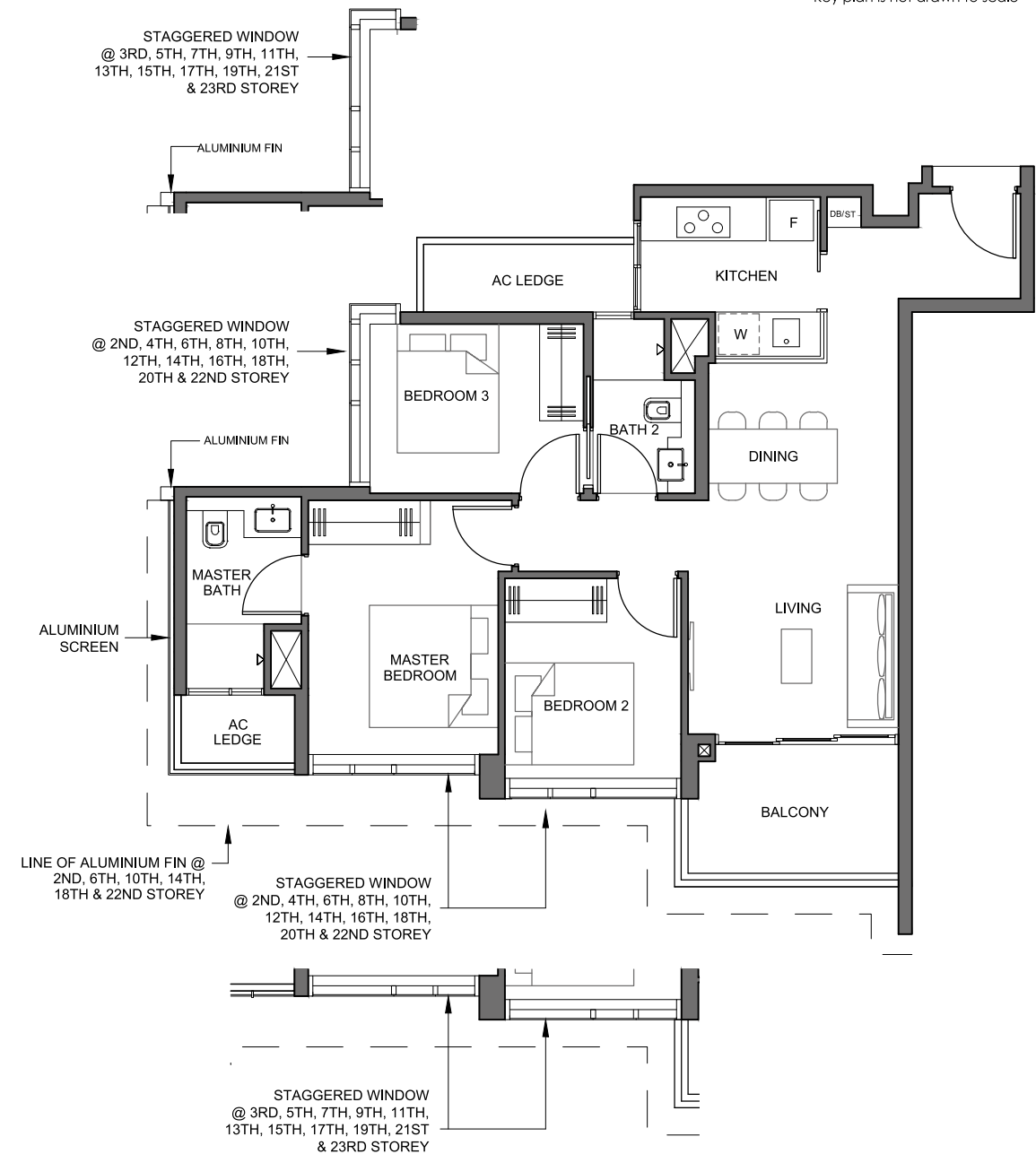
TYPE 3BR - 4

Area 85 sq m / (approx. 915 sq ft)
(Inclusive of 7 sq m balcony
& 5 sq m AC ledge)

Block 8F #02-58 TO #23-58 (mirrored)
#02-61 TO #23-61



Key plan is not drawn to scale



0 1 2 3 4 5M

LEGEND:
F - Fridge DB - Distribution Board ST - Storage W - Washer Cum Dryer
U/CF - Under Counter Fridge WIC - Under Counter Wine Chiller

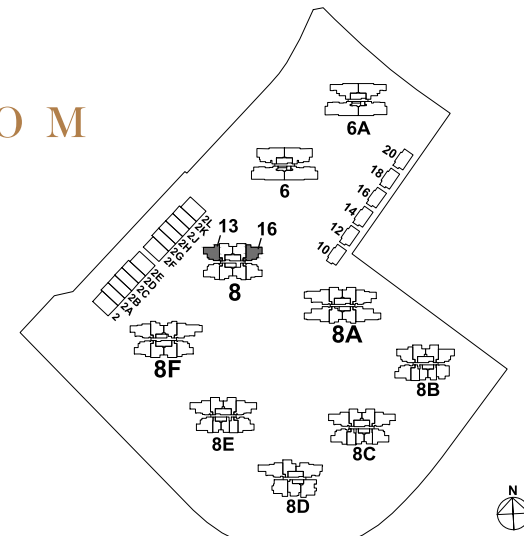
All plans are subjected as may be approved by relevant authorities. Floor areas are approximate measurements and are subjected to final survey.
The balcony shall not be enclosed unless with the approved screen. For illustration of the approved balcony screen, please refer to Annexure 1 of this brochure.

3 - BED ROOM

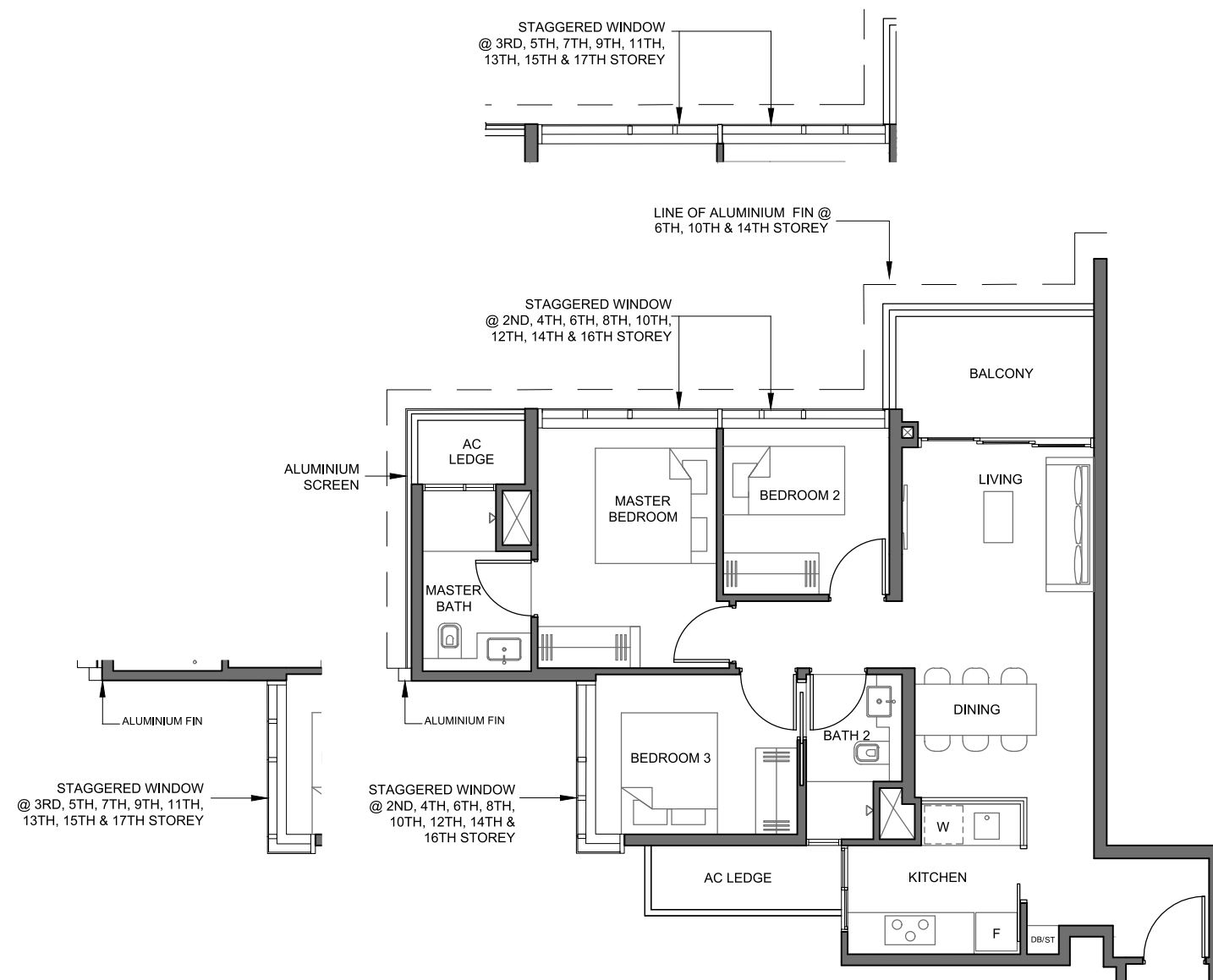
TYPE 3BR - 5

Area 84 sq m / (approx. 904 sq ft)
(Inclusive of 7 sq m balcony
& 5 sq m AC ledge)

Block 8 #02-13 TO #17-13
#02-16 TO #17-16 (mirrored)



Key plan is not drawn to scale



0 1 2 3 4 5M

LEGEND:
F - Fridge DB - Distribution Board ST - Storage W - Washer Cum Dryer
U/CF - Under Counter Fridge WIC - Under Counter Wine Chiller
Only Applicable to High Void

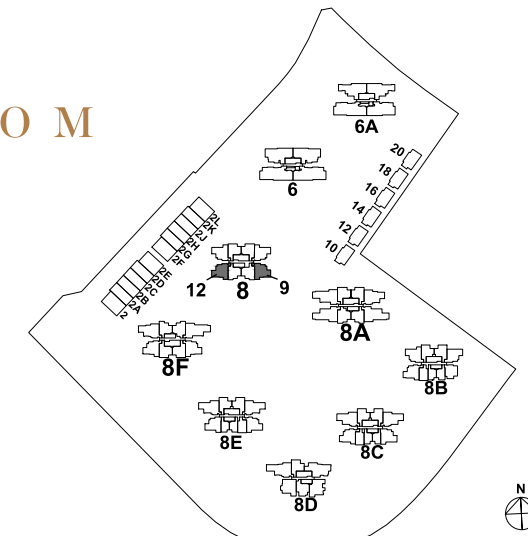
All plans are subjected as may be approved by relevant authorities. Floor areas are approximate measurements and are subjected to final survey.
The balcony shall not be enclosed unless with the approved screen. For illustration of the approved balcony screen, please refer to Annexure 1 of this brochure.

3 - BED ROOM

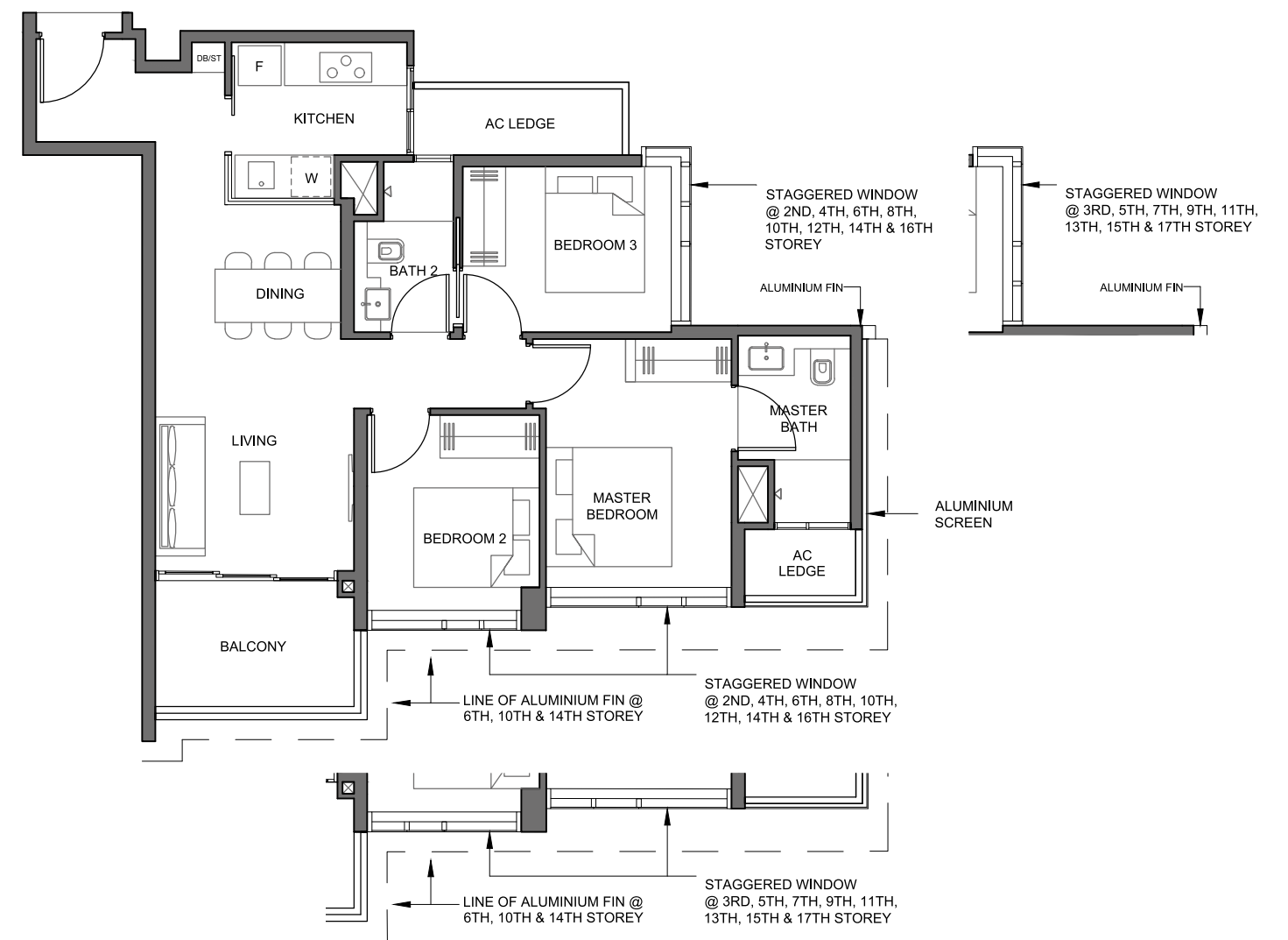
TYPE 3BR - 6

Area 85 sq m / (approx. 915 sq ft)
(Inclusive of 7 sq m balcony
& 5 sq m AC ledge)

Block 8 #02-09 TO #17-09
#02-12 TO #17-12 (mirrored)



Key plan is not drawn to scale



0 1 2 3 4 5M

LEGEND:
F - Fridge DB - Distribution Board ST - Storage W - Washer Cum Dryer
U/CF - Under Counter Fridge WIC - Under Counter Wine Chiller
Only Applicable to High Void

All plans are subjected as may be approved by relevant authorities. Floor areas are approximate measurements and are subjected to final survey.
The balcony shall not be enclosed unless with the approved screen. For illustration of the approved balcony screen, please refer to Annexure 1 of this brochure.

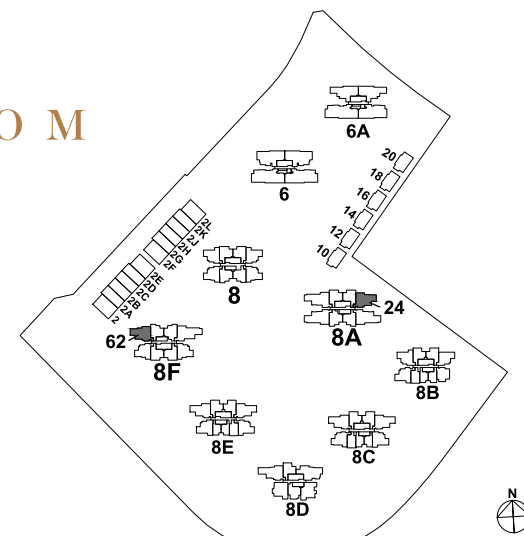
3 - B E D R O O M

TYPE 3BR - P2

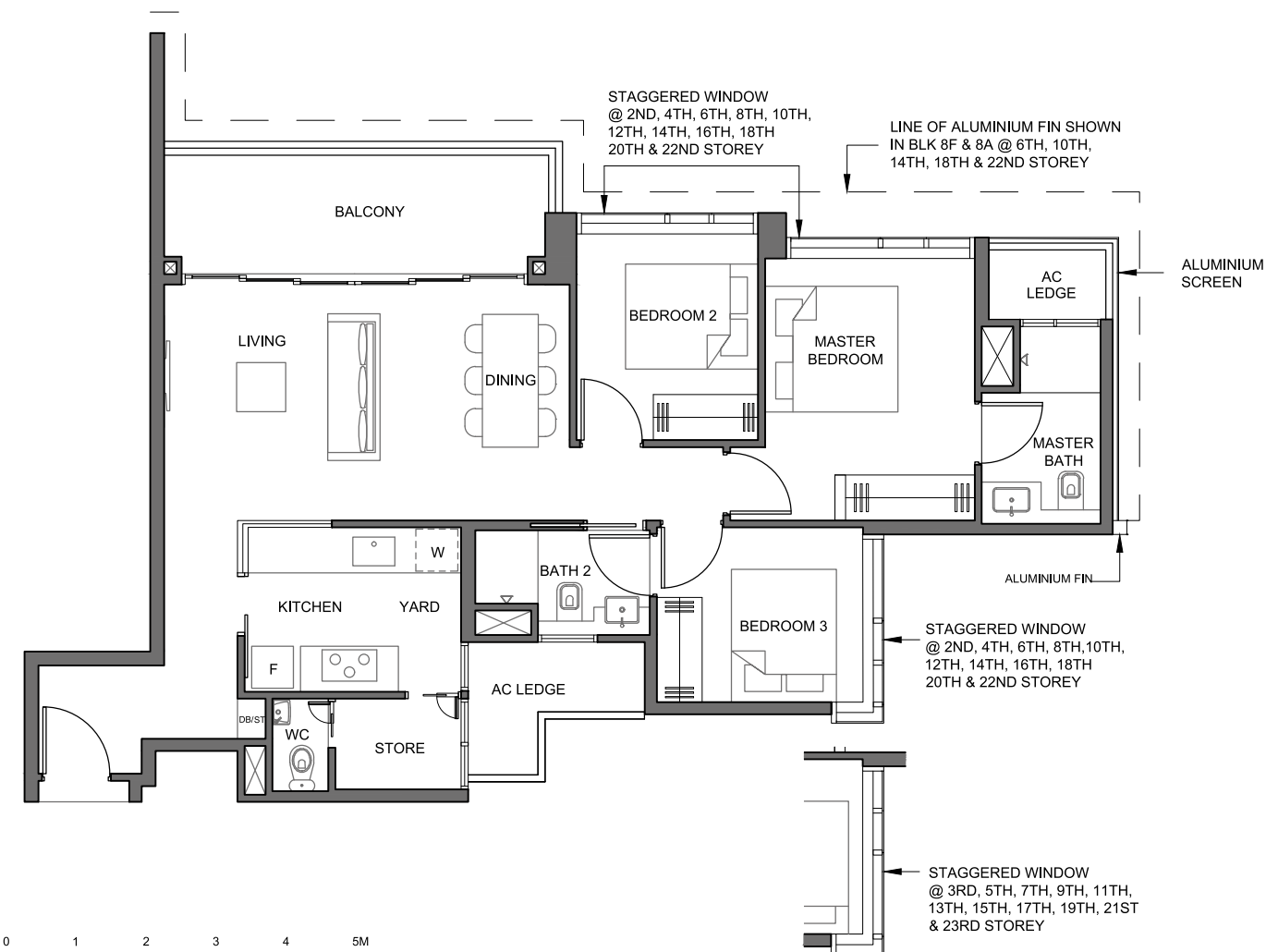
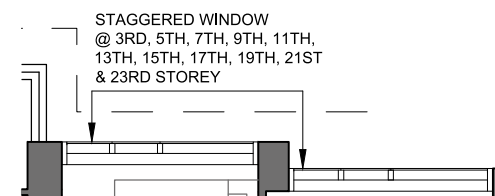
Area 100 sq m / (approx. 1076 sq ft)
(Inclusive of 11 sq m balcony
& 6 sq m AC ledge)

Block 8A #02-24 TO #23-24

Block 8F #02-62 TO #23-62 (mirrored)



Key plan is not drawn to scale



LEGEND:
F - Fridge DB - Distribution Board ST - Storage W - Washer Cum Dryer Only Applicable to High Void
U/CF - Under Counter Fridge WIC - Under Counter Wine Chiller

All plans are subjected as may be approved by relevant authorities. Floor areas are approximate measurements and are subjected to final survey.
The balcony shall not be enclosed unless with the approved screen. For illustration of the approved balcony screen, please refer to Annexure 1 of this brochure.

4 - B E D R O O M

TYPE 4BR - P1

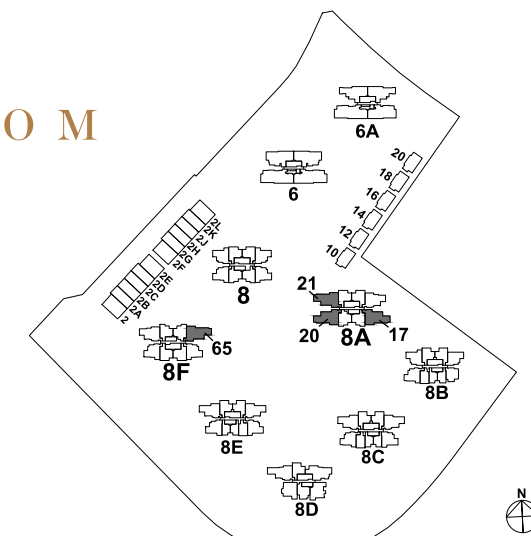
Area 120 sq m / (approx. 1292 sq ft)
(Inclusive of 11 sq m balcony
& 6 sq m AC ledge)

Block 8A #02-17 TO #23-17

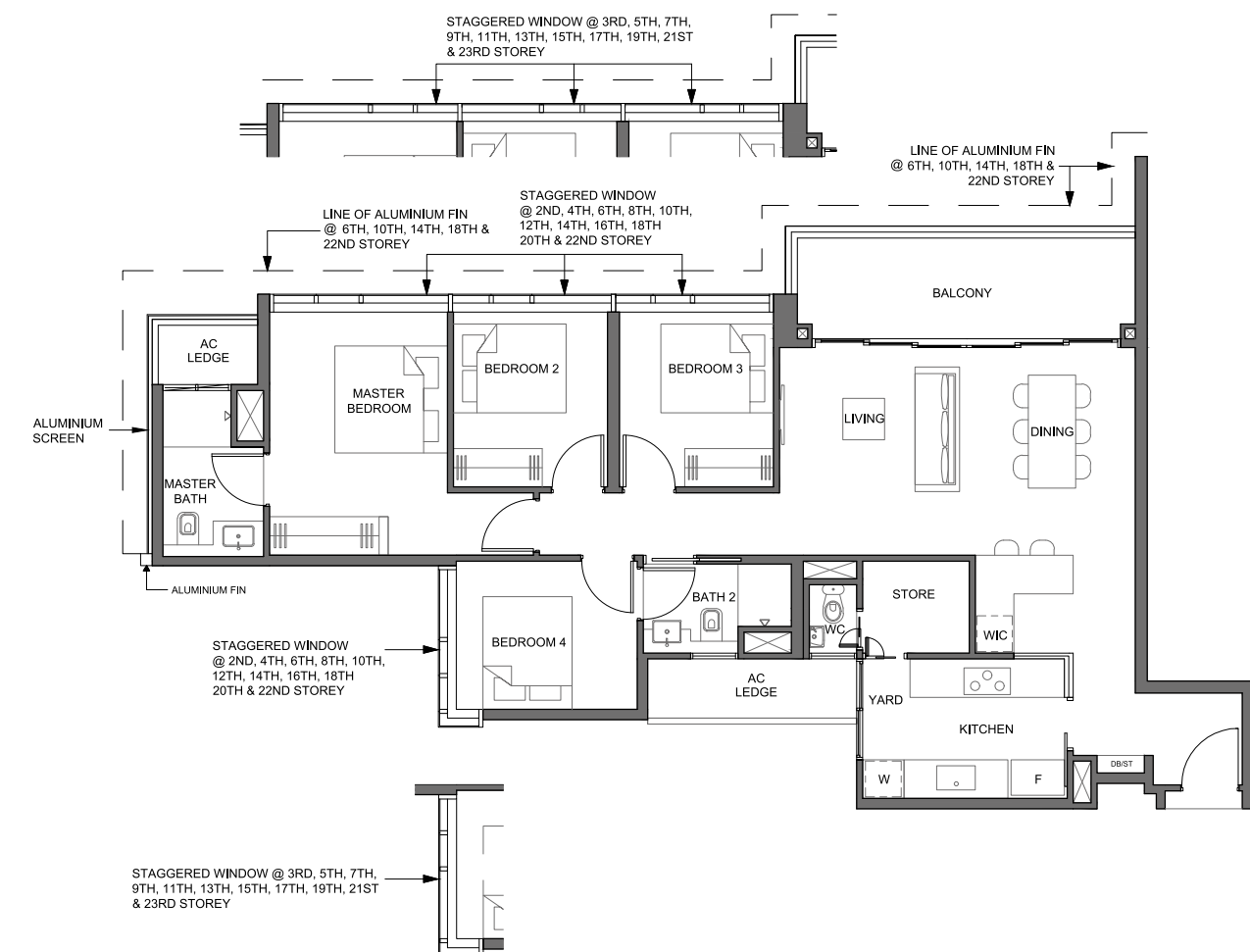
#02-20 TO #23-20 (mirrored)

#02-21 TO #23-21

Block 8F #02-65 TO #23-65 (mirrored)



Key plan is not drawn to scale



LEGEND:
F - Fridge DB - Distribution Board ST - Storage W - Washer & Dryer Only Applicable to High Void
U/CF - Under Counter Fridge WIC - Under Counter Wine Chiller

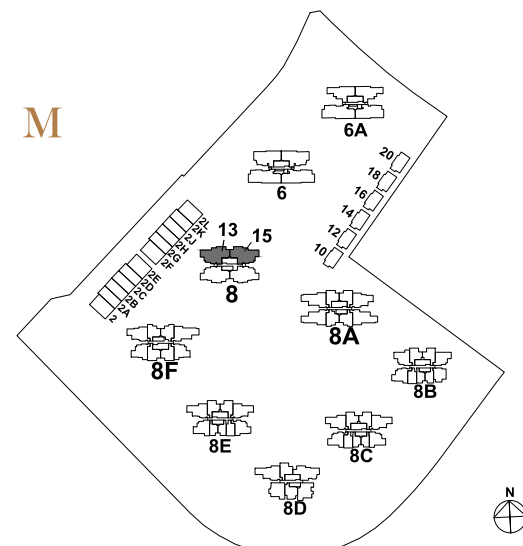
All plans are subjected as may be approved by relevant authorities. Floor areas are approximate measurements and are subjected to final survey.
The balcony shall not be enclosed unless with the approved screen. For illustration of the approved balcony screen, please refer to Annexure 1 of this brochure.

5 - BED ROOM

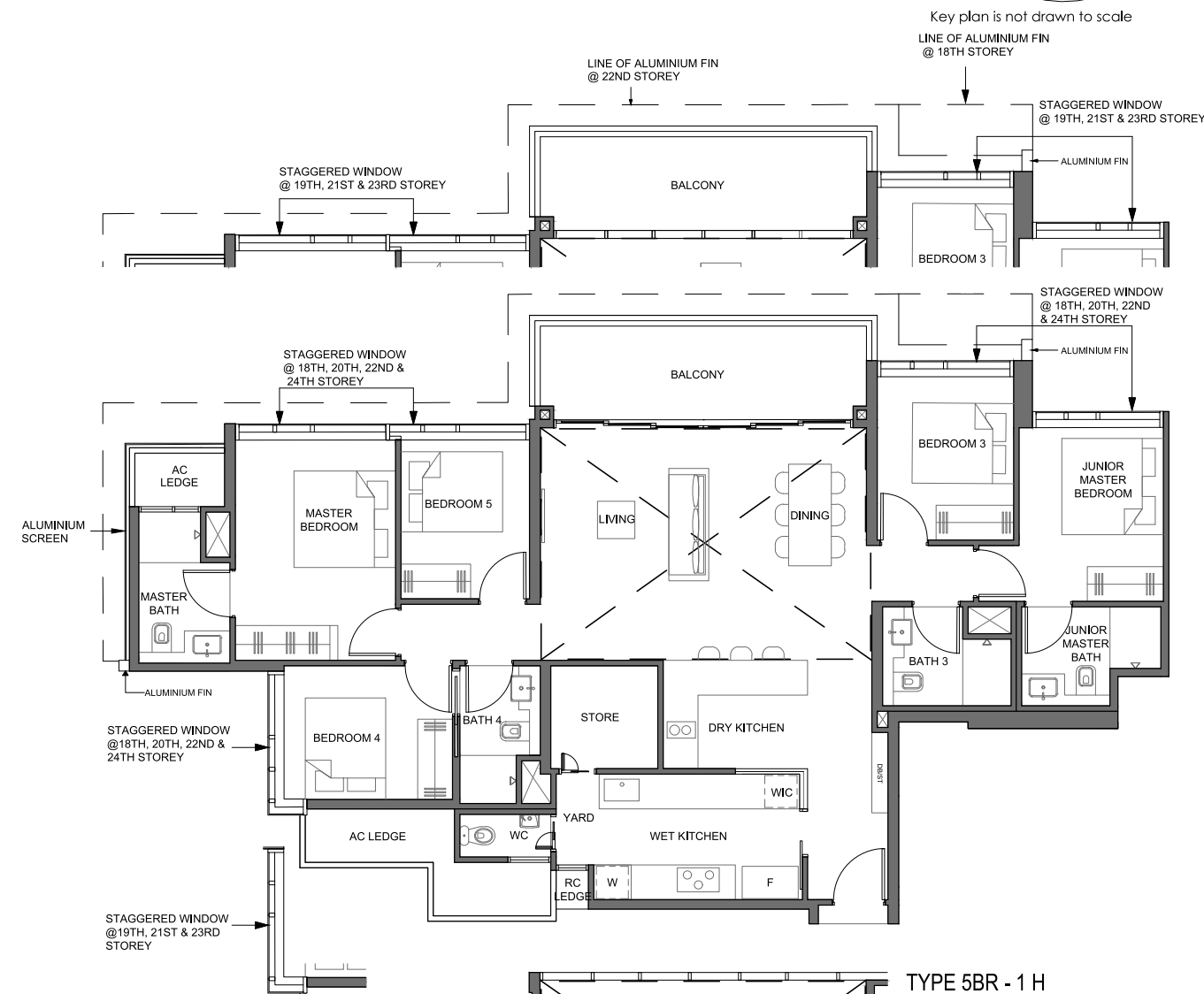
TYPE 5BR - 1

Area 155 sq m / (approx. 1668 sq ft)
(Inclusive of 13 sq m balcony
& 7 sq m AC ledge)

Block 8 #18-13 TO #23-13
#18-15 TO #23-15 (mirrored)



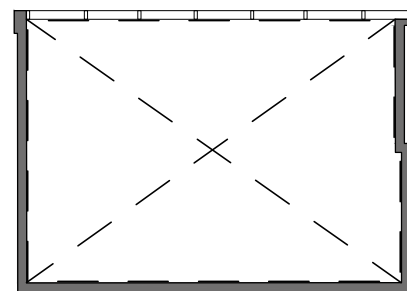
Key plan is not drawn to scale



TYPE 5BR - 1 H

Area 183 sq m / (approx. 1970 sq ft)
(Inclusive of 13 sq m balcony,
7 sq m AC ledge & 28 sq m
high void)

Block 8 #24-13 &
#24-15 (mirrored)



LEGEND:
F - Fridge DB - Distribution Board ST - Storage W - Washer & Dryer Only Applicable to High Void
U/CF - Under Counter Fridge WIC - Under Counter Wine Chiller

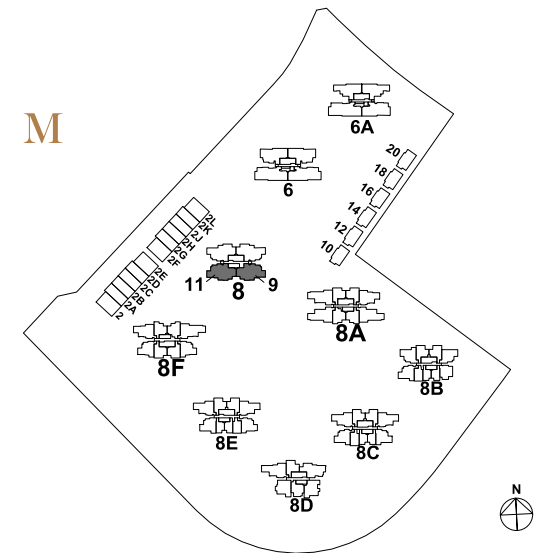
All plans are subjected as may be approved by relevant authorities. Floor areas are approximate measurements and are subjected to final survey.
The balcony shall not be enclosed unless with the approved screen. For illustration of the approved balcony screen, please refer to Annexure 1 of this brochure.

5 - BED ROOM

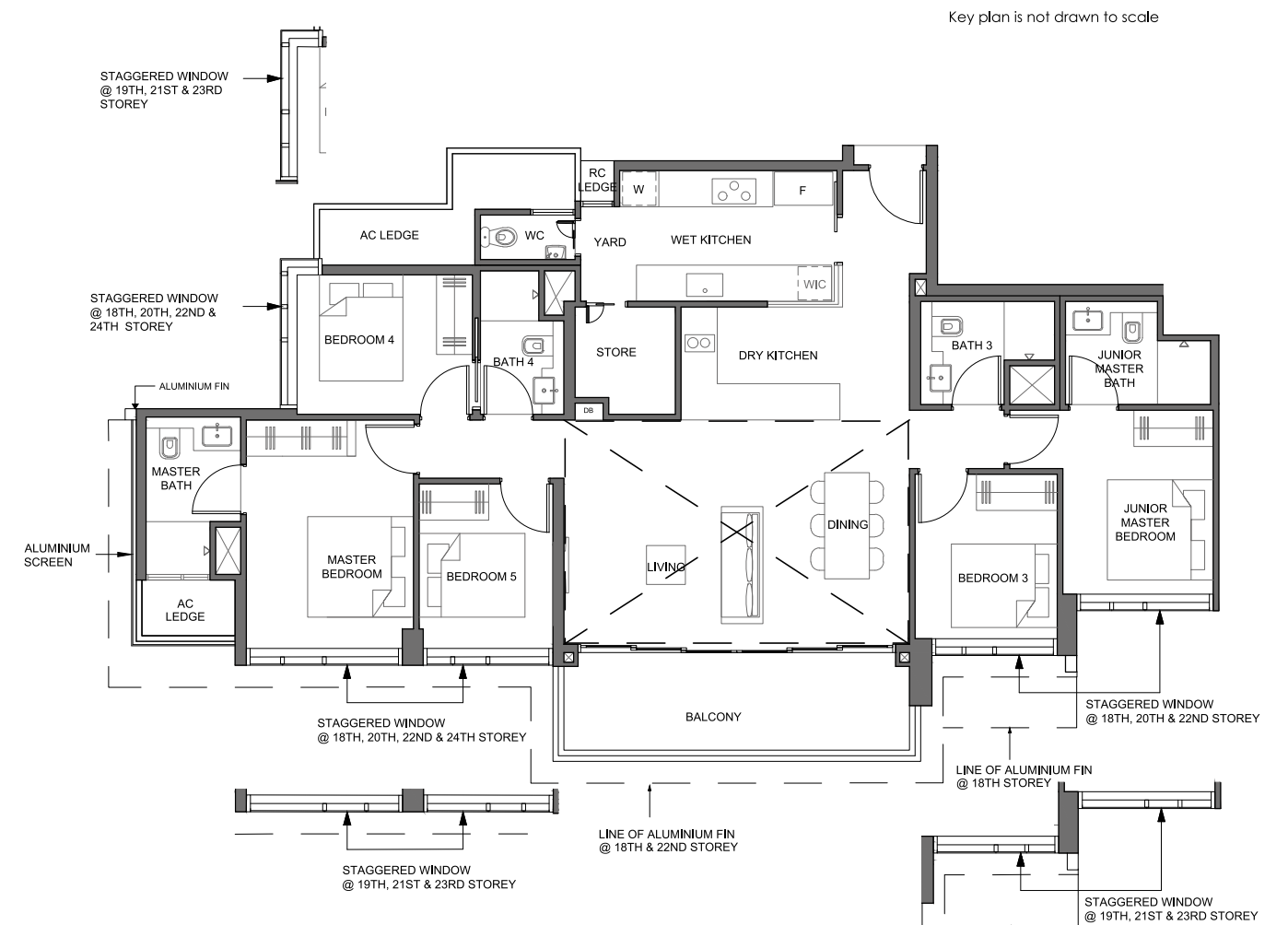
TYPE 5BR - 2

Area 152 sq m / (approx. 1636 sq ft)
(Inclusive of 13 sq m balcony
& 7 sq m AC ledge)

Block 8 #18-09 TO #23-09 (mirrored)
#18-11 TO #23-11



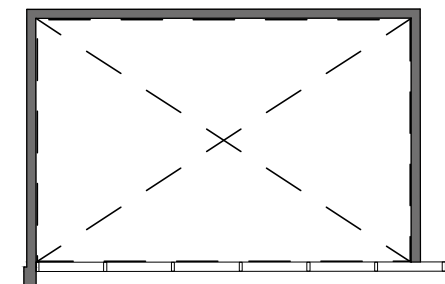
Key plan is not drawn to scale



TYPE 5BR - 2 H

Area 179 sq m / (approx. 1927 sq ft)
(Inclusive of 13 sq m balcony,
7 sq m AC ledge & 27 sq m
high void)

Block 8 #24-09 (mirrored)
#24-11



LEGEND:
F - Fridge DB - Distribution Board ST - Storage W - Washer & Dryer Only Applicable to High Void
U/CF - Under Counter Fridge WIC - Under Counter Wine Chiller

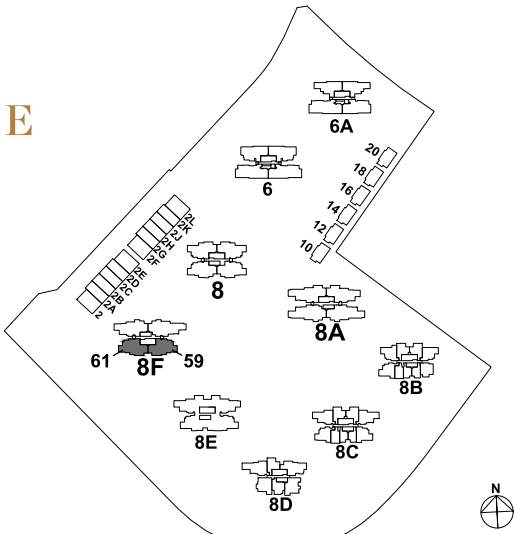
All plans are subjected as may be approved by relevant authorities. Floor areas are approximate measurements and are subjected to final survey.
The balcony shall not be enclosed unless with the approved screen. For illustration of the approved balcony screen, please refer to Annexure 1 of this brochure.

P E N T H O U S E

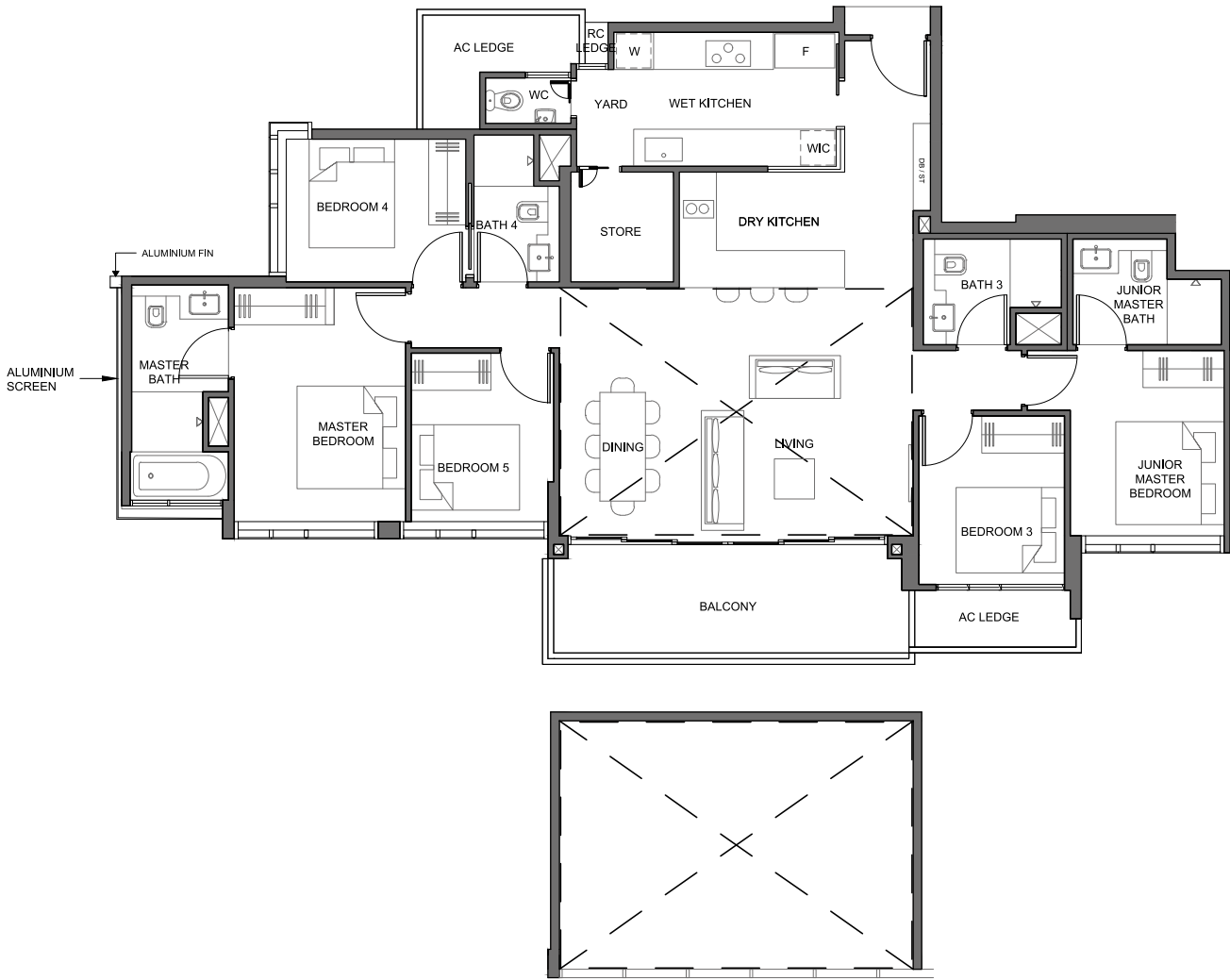
TYPE PH - 1

Area 185 sq m / (approx. 1991 sq ft)
(Inclusive of 14 sq m balcony,
7 sq m AC ledge & 29 sq m
high void)

Block 8F #24-59 (mirrored)
#24-61



Key plan is not drawn to scale



0 1 2 3 4 5M

LEGEND:
F - Fridge DB - Distribution Board ST - Storage W - Washer & Dryer Only Applicable to High Void
U/CF - Under Counter Fridge WIC - Under Counter Wine Chiller

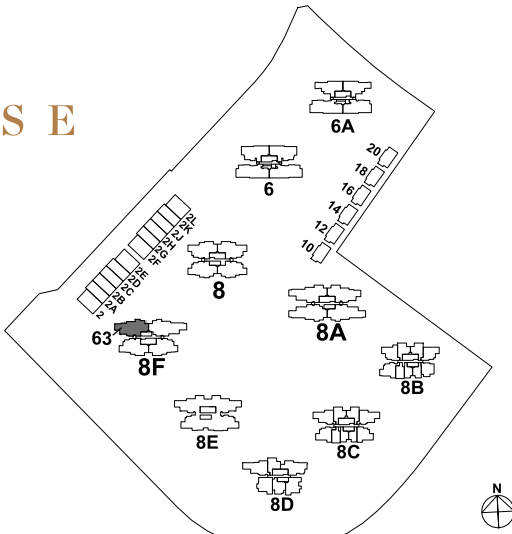
All plans are subjected as may be approved by relevant authorities. Floor areas are approximate measurements and are subjected to final survey.
The balcony shall not be enclosed unless with the approved screen. For illustration of the approved balcony screen, please refer to Annexure 1 of this brochure.

P E N T H O U S E

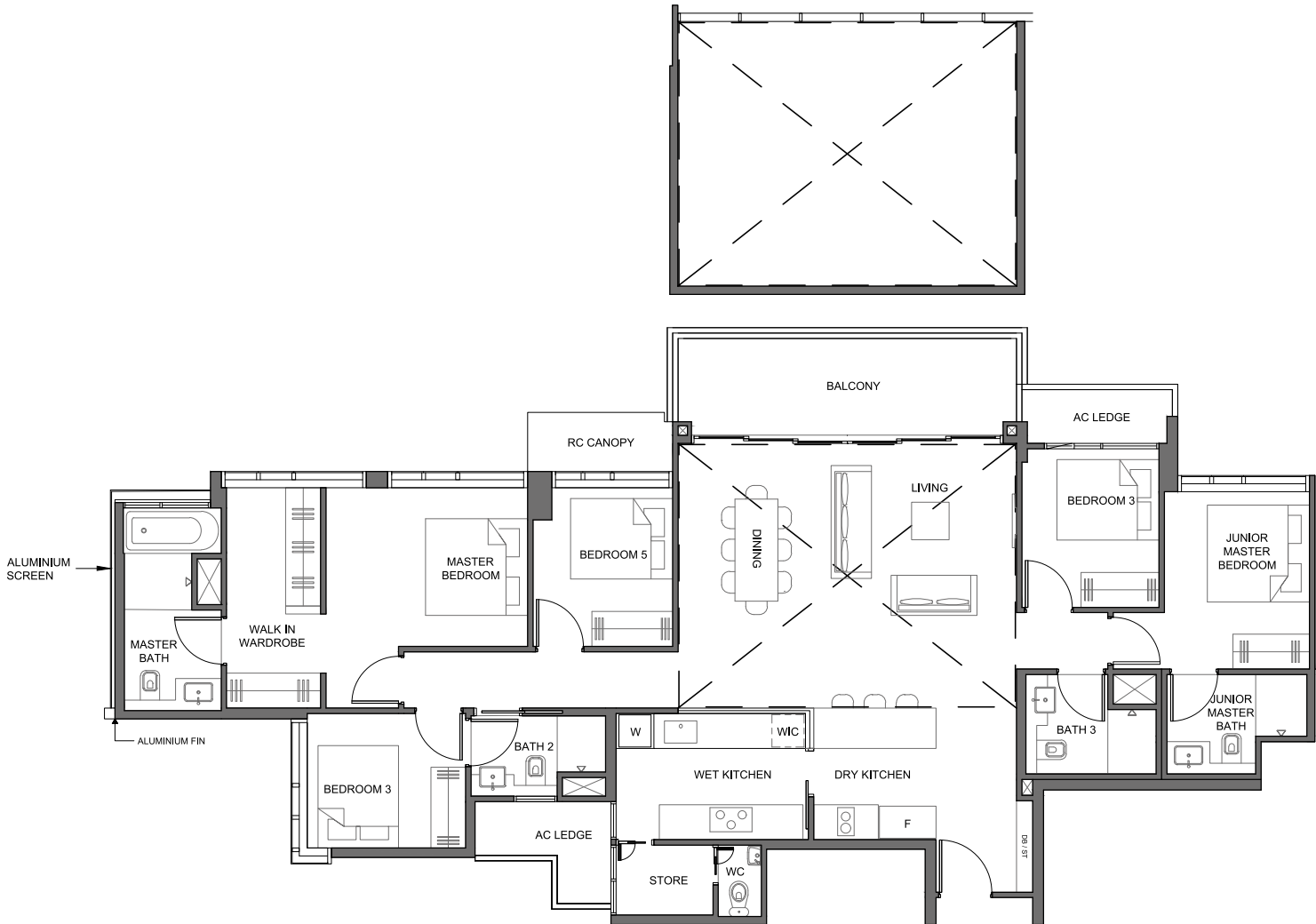
TYPE PH - 2

Area 201 sq m / (approx. 2164 sq ft)
(Inclusive of 14 sq m balcony
7 sq m AC ledge & 33 sq m
high void)

Block 8F #24-63



Key plan is not drawn to scale



0 1 2 3 4 5M

LEGEND:
F - Fridge DB - Distribution Board ST - Storage W - Washer & Dryer Only Applicable to High Void
U/CF - Under Counter Fridge WIC - Under Counter Wine Chiller

All plans are subjected as may be approved by relevant authorities. Floor areas are approximate measurements and are subjected to final survey.
The balcony shall not be enclosed unless with the approved screen. For illustration of the approved balcony screen, please refer to Annexure 1 of this brochure.

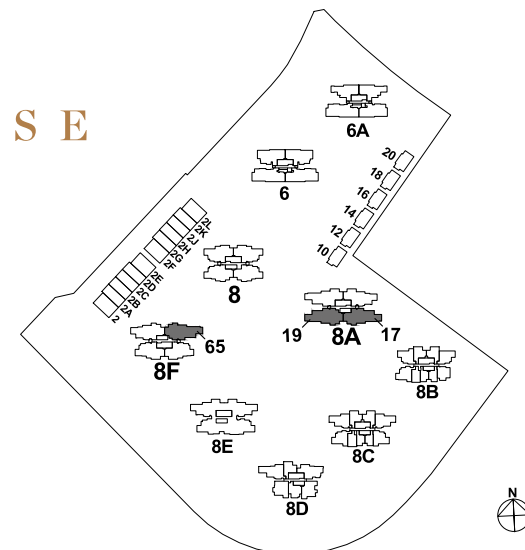
PENTHOUSE

TYPE PH - 3

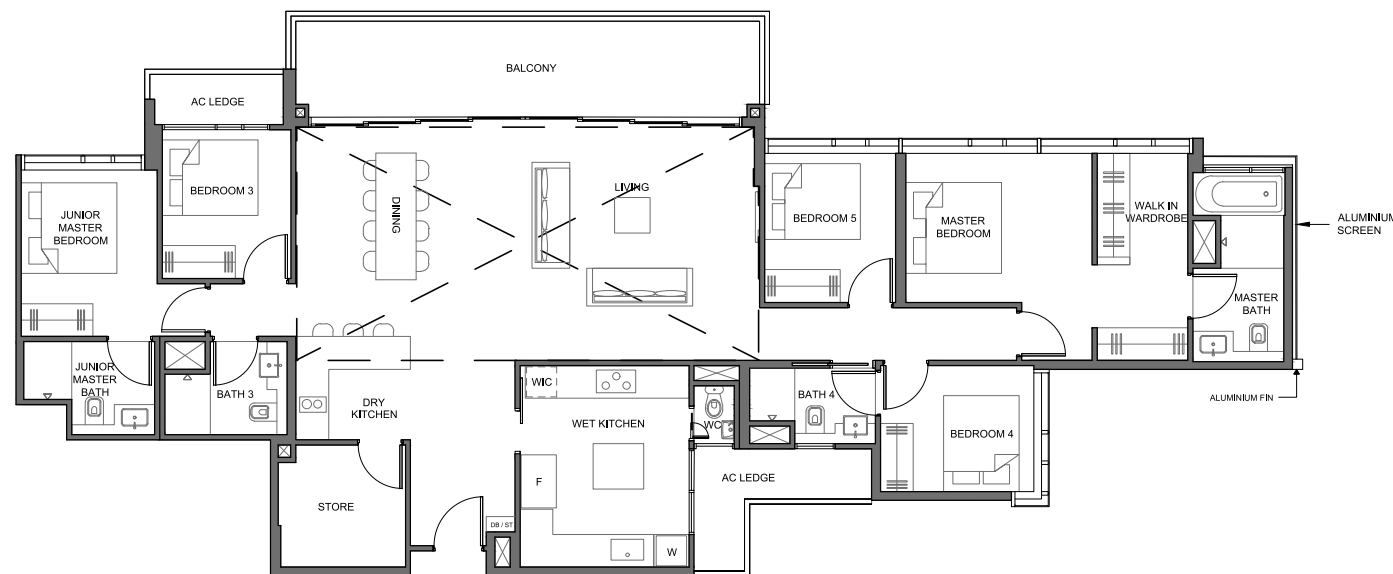
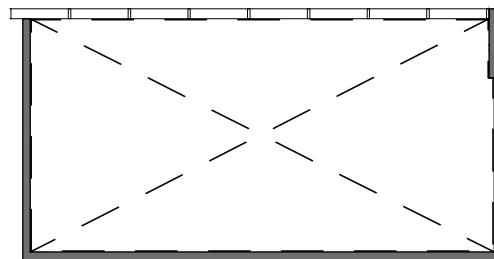
Area 242 sq m / (approx. 2605 sq ft)
(Inclusive of 20 sq m balcony,
8 sq m AC ledge & 45 sq m
high void)

Block 8A #24-17 (mirrored) & #24-19

Block 8F #24-65



Key plan is not drawn to scale



0 1 2 3 4 5M

LEGEND:
F - Fridge DB - Distribution Board ST - Storage W - Washer & Dryer Only Applicable to High Void

U/CF - Under Counter Fridge WIC - Under Counter Wine Chiller

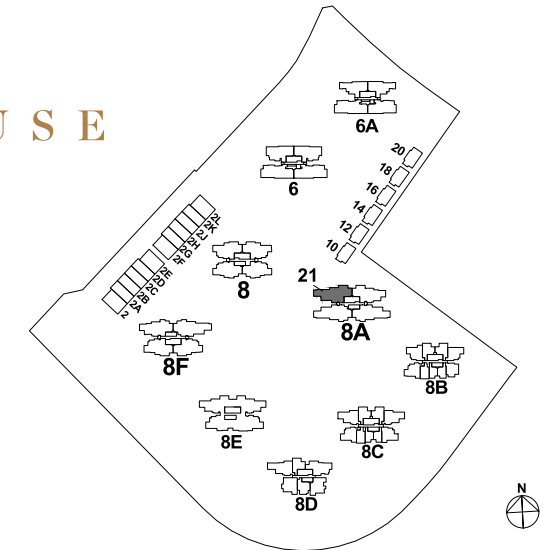
All plans are subjected as may be approved by relevant authorities. Floor areas are approximate measurements and are subjected to final survey.
The balcony shall not be enclosed unless with the approved screen. For illustration of the approved balcony screen, please refer to Annexure 1 of this brochure.

PENTHOUSE

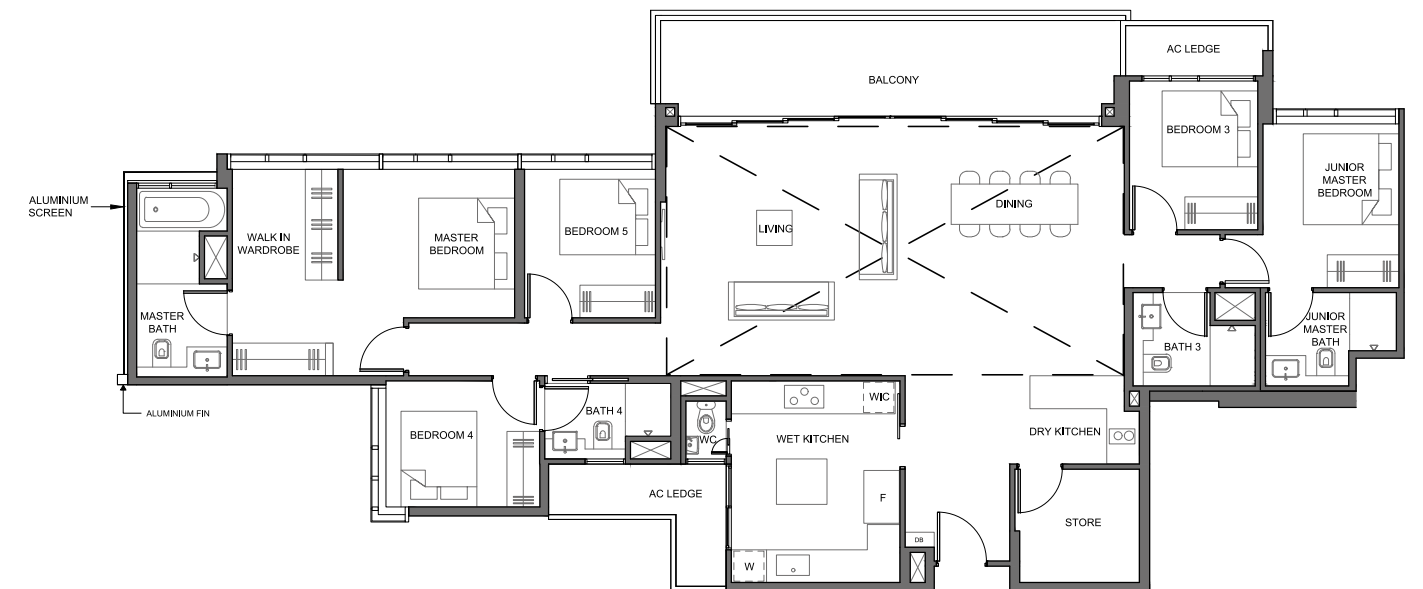
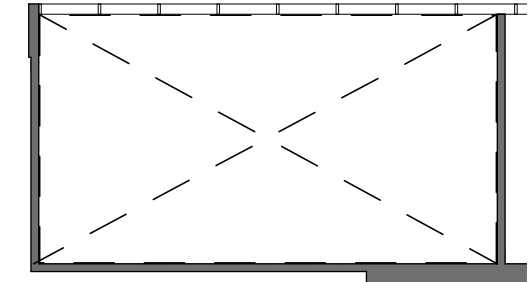
TYPE PH - 4

Area 248 sq m / (approx. 2669 sq ft)
(Inclusive of 20 sq m balcony,
8 sq m AC ledge & 48 sq m
high void)

Block 8A #24-21



Key plan is not drawn to scale



0 1 2 3 4 5M

LEGEND:
F - Fridge DB - Distribution Board ST - Storage W - Washer & Dryer Only Applicable to High Void

U/CF - Under Counter Fridge WIC - Under Counter Wine Chiller

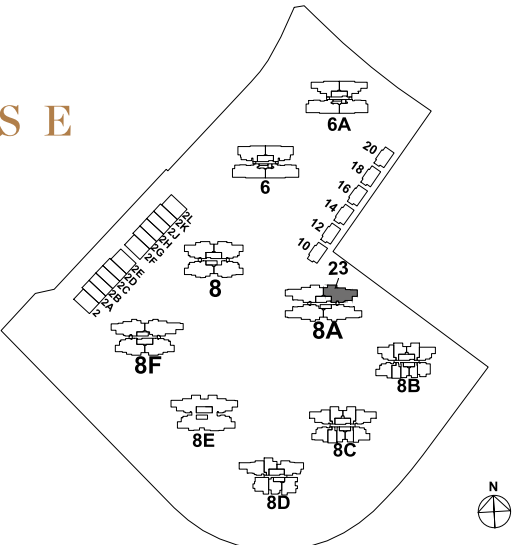
All plans are subjected as may be approved by relevant authorities. Floor areas are approximate measurements and are subjected to final survey.
The balcony shall not be enclosed unless with the approved screen. For illustration of the approved balcony screen, please refer to Annexure 1 of this brochure.

PENTHOUSE

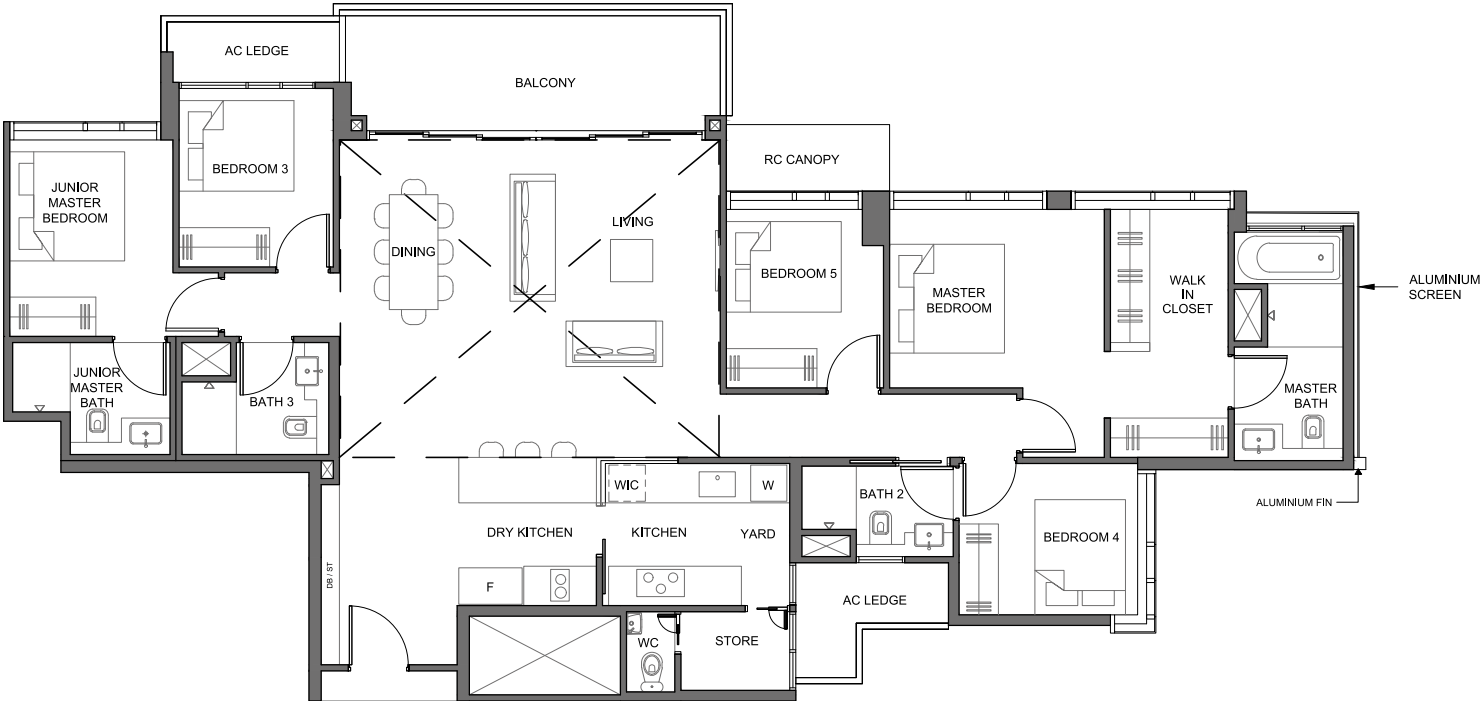
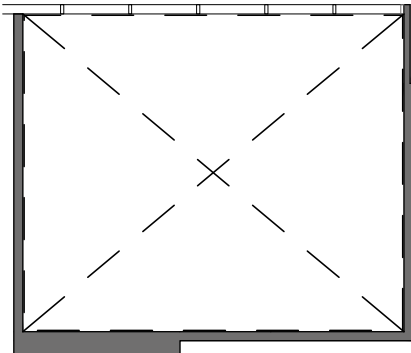
TYPE PH - 5

Area 206 sq m / (approx. 2217 sq ft)
(Inclusive of 14 sq m balcony,
7 sq m AC ledge & 35 sq m
high void)

Block 8A #24-23



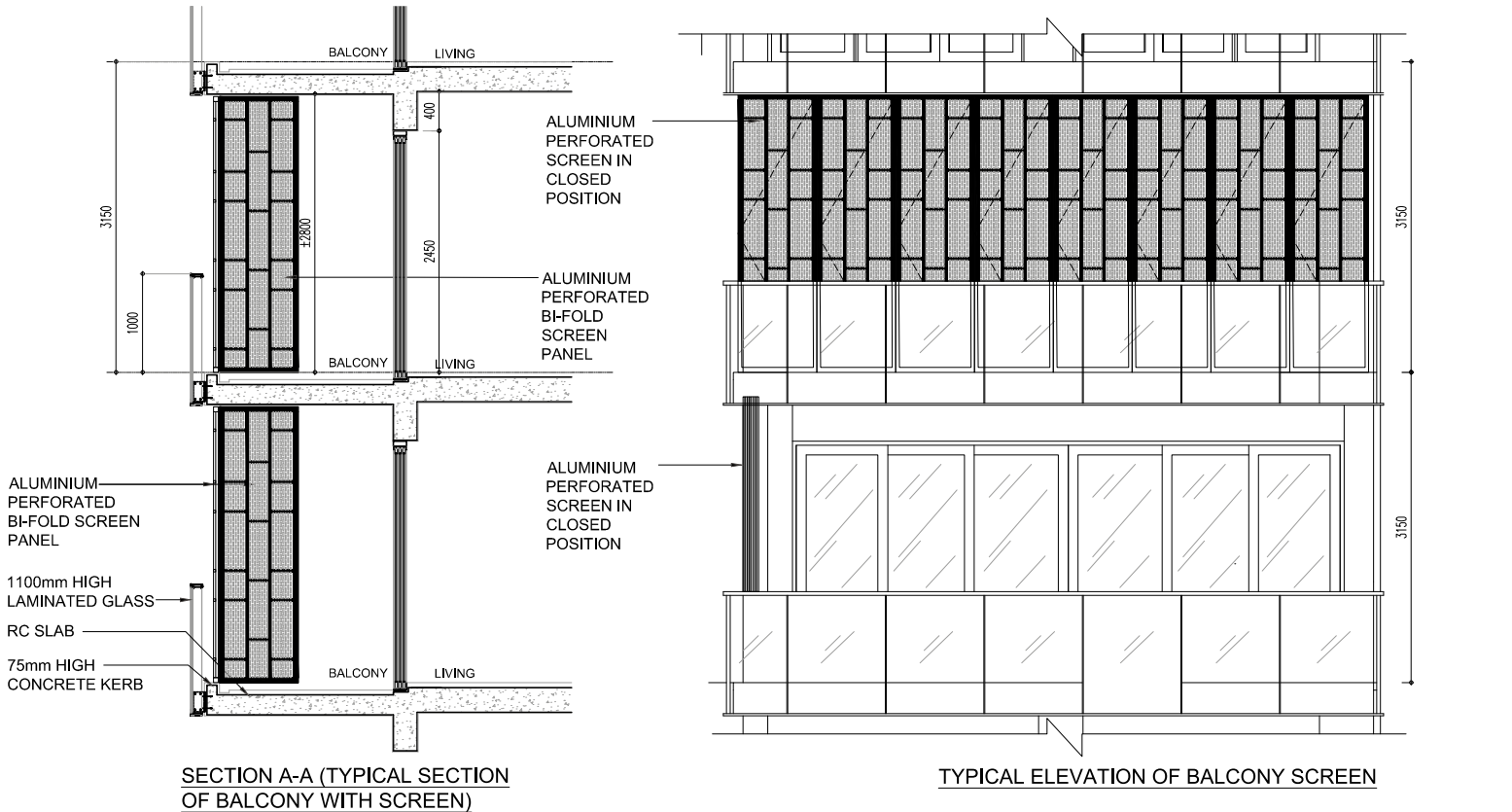
Key plan is not drawn to scale



LEGEND:
F - Fridge DB - Distribution Board ST - Storage W - Washer & Dryer
U/CF - Under Counter Fridge WIC - Under Counter Wine Chiller

All plans are subjected as may be approved by relevant authorities. Floor areas are approximate measurements and are subjected to final survey.
The balcony shall not be enclosed unless with the approved screen. For illustration of the approved balcony screen, please refer to Annexure 1 of this brochure.

ANNEXURE 1



BLK- 8, 8A AND 8F

BALCONY SCREEN NOTICE

1. THE BALCONY SHALL NOT BE ENCLOSED UNLESS WITH THE APPROVED BALCONY SCREEN.
2. THE PURCHASER WILL HAVE TO BEAR THE COST OF INSTALLING THE BALCONY SCREEN IF THEY WISH TO, AFTER TAKING OVER THE UNIT.

THE PROPOSED BALCONY SHALL BE POROUS ENOUGH TO ALLOW FOR NATURAL VENTILATION WITHIN THE BALCONY AT ALL TIMES EVEN WHEN THE SCREENS ARE FULLY DRAWN CLOSED. THE PROPOSED BALCONY SCREEN SHALL ALSO BE CAPABLE OF BEING DRAWN OPEN OR RETRACTED FULLY.

BP NO.: A1716-00006-2018-BP01
BP APPROVAL DATE: 12 JUNE 2019

